

CURTAIN TRACKS

Standard Curtain Tracks



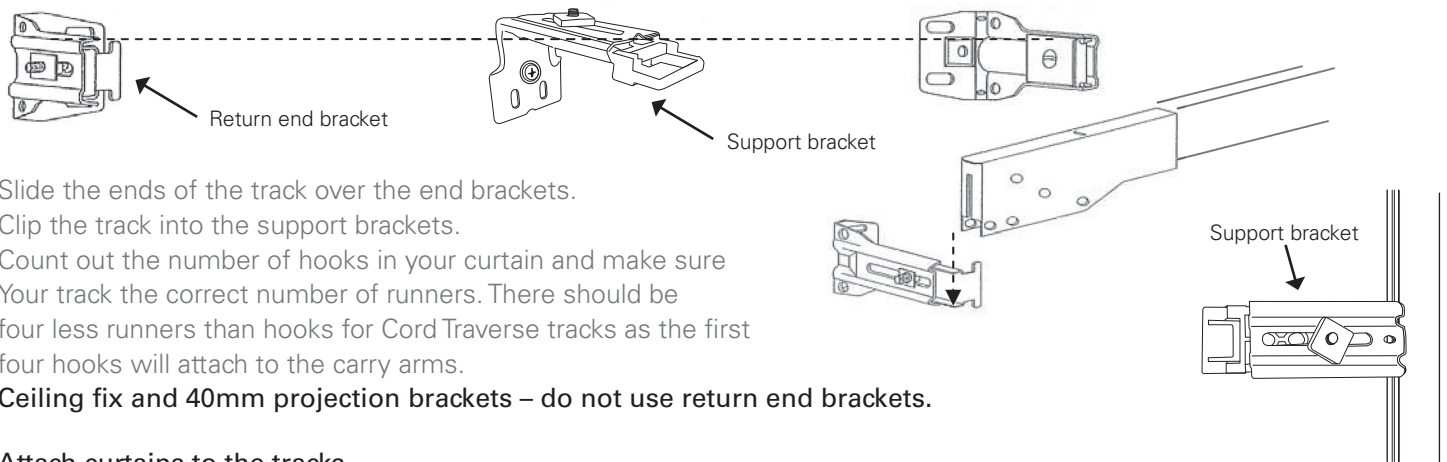
Fitting Instructions

April 2017

If installing on plaster or wallboard where possible pick up timber stud. If unable to locate stud, use a suitable wall plug or toggle for plasterboard to hold the brackets.

Installing the Track to the Brackets

Mark positions where the track will extend to. Attach the return end brackets to these points with screws. Attach support brackets evenly spaced in between the end brackets. The maximum distance between brackets should not exceed 1 metre. The top edge of the support brackets at the point that they touch the wall should be the same height as the top edge of the end brackets at the point that they touch the wall.



Slide the ends of the track over the end brackets.

Clip the track into the support brackets.

Count out the number of hooks in your curtain and make sure your track the correct number of runners. There should be four less runners than hooks for Cord Traverse tracks as the first four hooks will attach to the carry arms.

Ceiling fix and 40mm projection brackets – do not use return end brackets.

Attach curtains to the tracks

Cord Traverse Track

Attach the first four hooks of the curtain to the master carrier. Attach your next hook to the runner closest to the carrier and continue on to the edge of the track. Repeat the process for the second side if the blind is centre close.


Hand Traverse Track

Attach your first hook to the outside most runner and work your way in.


How to install the Cord Tension device

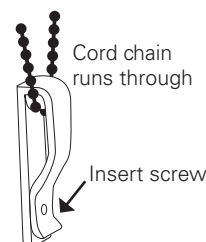
The Tension Device reduces the chance of strangulation by limiting access to the control cord. When fitted properly it should hold any looped controls firmly tensioned against an architrave or window frame. This should make it hard for a young child to fit through the controls.

Clip the cord through the bottom of the Tension Device. Position the Tension Device on the window frame or architrave in a position that will not compromise the operation of the control cord / chain. Make sure the controls are not twisted when the Tension Device is in the mounting position. Ensure that there is SUFFICIENT TENSION on the cord – however excessive tension will impair smooth operation of the blind. Hold the Tension Device in the correct position, as shown. Insert and secure the screw through hole. Make sure the screw is affixed into the architrave or window frame (solid material like MDF or Hardwood).

**WARNING**

WARNING: Young children have died by wrapping loose curtain and blind cords or chains around their necks. Secure cords or chains with cord guides or keep them out of reach by winding them around a cleat. Move cots and furniture away from window covering cords or chains. Do not remove this label.





TURN OVER FOR LENGTHS

CURTAIN TRACKS

Standard Curtain Tracks



Fitting Instructions

April 2017

300mm - 1099mm LENGTH

1 = TOP FIX	2 BRKTS
2 = 40MM	2 BRKTS
3 = SINGLE	2 RET BRKTS
4 = DBLE	2 RET BRKTS

1100mm - 1799mm LENGTH

1 = TOP FIX	3 BRKTS
2 = 40MM	3 BRKTS
3 = SINGLE	2 RET 1 SUPP
4 = DBLE	2 RET 1 SUPP

1800mm - 2499mm LENGTH

1 = TOP FIX	4 BRKTS
2 = 40MM	4 BRKTS
3 = SINGLE	2 RET 2 SUPP
4 = DBLE	2 RET 2 SUPP

2500mm - 3199mm LENGTH

1 = TOP FIX	5 BRKTS
2 = 40MM	5 BRKTS
3 = SINGLE	2 RET 3 SUPP
4 = DBLE	2 RET 3 SUPP

3200mm - 3899mm LENGTH

1 = TOP FIX	6 BRKTS
2 = 40MM	6 BRKTS
3 = SINGLE	2 RET 4 SUPP
4 = DBLE	2 RET 4 SUPP

3900mm - 4599mm LENGTH

1 = TOP FIX	7 BRKTS
2 = 40MM	7 BRKTS
3 = SINGLE	2 RET 5 SUPP
4 = DBLE	2 RET 5 SUPP

4600mm - 5299mm LENGTH

1 = TOP FIX	8 BRKTS
2 = 40MM	8 BRKTS
3 = SINGLE	2 RET 6 SUPP
4 = DBLE	2 RET 6 SUPP

5300mm - 5999mm LENGTH

1 = TOP FIX	9 BRKTS
2 = 40MM	9 BRKTS
3 = SINGLE	2 RET 7 SUPP
4 = DBLE	2 RET 7 SUPP

6000mm LENGTH

1 = TOP FIX	10 BRKTS
2 = 40MM	10 BRKTS
3 = SINGLE	2 RET 8 SUPP
4 = DBLE	2 RET 8 SUPP